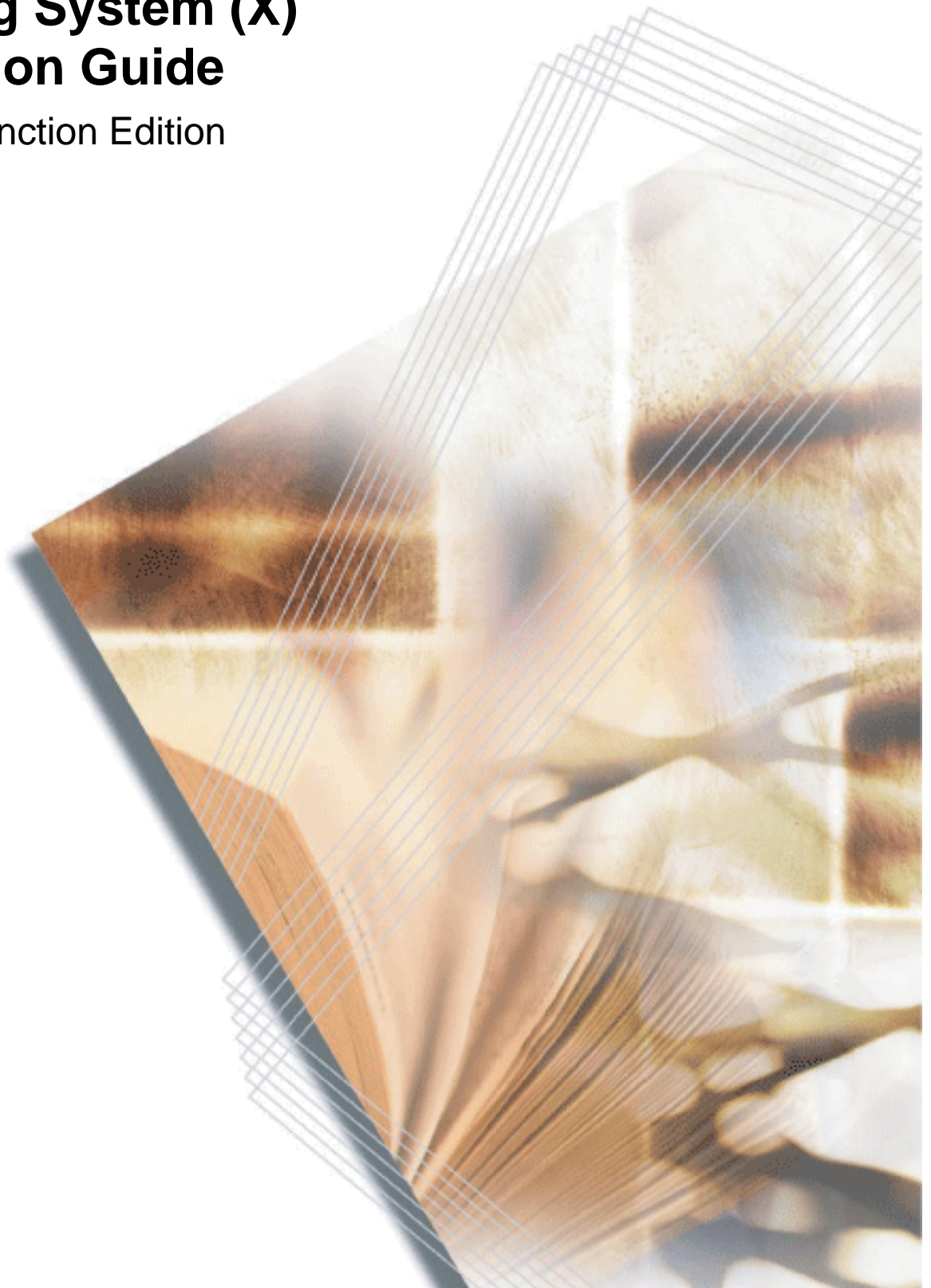


Printing System (X) Operation Guide

Printer Function Edition



Contents

1	Printer Driver Settings	
	Printer Properties	1-1
	Accessing Printer Properties	1-1
	Installing Optional Devices	1-1
	Compatibility Settings	1-2
	Printing Features	1-3
	Using a Different Print Size	1-3
	Printing Multiple Pages per Sheet	1-4
	Scaling	1-5
	Matching the Paper Size before Printing	1-6
	Printing on Paper of Non-Standard Sizes	1-8
	Printing with Custom Paper Sizes	1-10
	Printing on Both Sides	1-10
	Printing Watermarks	1-11
	Print Quality	1-14
	Grayscale Adjustment	1-15
	Advanced Graphics Settings	1-16
	Detailed Graphics Settings	1-17
	Useful Functions	1-18
	Cover Mode, Page Insert, and Transparency	1-18
	Booklet Printing	1-24
	Collating	1-25
	Saving Profiles	1-25
2	Status Monitor	
	Accessing Status Monitor	2-1
	Exiting Status Monitor	2-1
	Status Monitor Settings	2-2
	Event Notification Tab	2-2
	Appearance Tab	2-3
3	Configuration Tool	
	Accessing the Configuration Tool	3-1
	Exiting the Configuration Tool	3-1
	Status Tab	3-2
	Input Tab	3-3
	Media Tab	3-4
	Management Tab	3-5
	InterfaceTab	3-6

Trademark Information

- Microsoft, Windows and WindowsNT are registered trademarks of Microsoft Corporation of America and other countries.
- Windows Me and Windows XP are trademarks of Microsoft Corporation.
- Ethernet is a registered trademark of Xerox Corporation.
- Novell and NetWare are registered trademarks of Novell, Inc.
- Adobe, Adobe Acrobat and Adobe Reader are registered trademarks of Adobe Systems Incorporated.

All other company and product names contained in this Operation Guide are trademarks or registered trademarks of their respective companies. The designations [™] and [®] will not be used in this Operation Guide.

- This product has been certified by the USB Implementers Forum, Inc.



All rights reserved. No part of this material may be reproduced or transmitted in any form or by any means, electronic or mechanical, including photocopying, recording or by any information storage and retrieval system, without permission in writing from the Publisher.

Legal Restriction On Copying

- It may be prohibited to copy copyrighted material without permission of the copyright owner.
- It is prohibited under any circumstances to copy domestic or foreign currencies.
- Copying other items may be prohibited.

Conventions

This manual uses the following conventions:

Convention	Description	Example
Bracket Bold Text Typeface	Used to emphasize the selection of the operation panel key.	Press the [Print] key.
Bold Typeface	Used to emphasize buttons or items to be selected in dialog boxes, and titles displayed in dialog boxes.	Click Next .
Italic Typeface	Used for references to additional information and other publications.	For details, refer to <i>Custom Installation on page 2-5</i> .
Courier Typeface	Used to denote messages or names displayed on the operation panel.	Error occurred. Press Printer.
Notes	Used to provide additional or useful information about a function or feature. Can also contain references to other publications.	<hr/> NOTE: You can set the emulation for each interface. <hr/>
Important	Used to provide important information.	<hr/> IMPORTANT: Formatting of the memory card must be executed from the printer. <hr/>

1 Printer Driver Settings

This chapter explains how to configure the settings of **Printer Properties** and the printer driver.

Printer Properties

Accessing Printer Properties

Follow these steps to access the **Printer Properties**.

- 1 Click **Start** in the Windows taskbar, and click **Printers and Faxes**. The **Printers and Faxes** window is displayed.

Windows 98/Me/2000: Open the **Start** menu, and click **Settings-Printers** in sequence to display the **Print** window.

- 2 Right-click the printer icon in the **Printers and Faxes** window. A shortcut menu is displayed.
- 3 Click **Properties** in the shortcut menu. The **Properties** dialog box is displayed.

Installing Optional Devices

If you use optional devices such as a paper feeder or duplex unit, specify the device on the **Device Settings** tab of **Printer Properties**.

- 1 Click the **Device Settings** tab.
- 2 In **Device options** of the **Device Settings** tab, select the check boxes for any optional devices installed in this machine.

NOTE: When you select the check box of an optional device shown in blue, a sub-dialog box is displayed with additional setting details. If a device option check box is already selected, double-click the device option to open the sub-dialog box.

Compatibility Settings

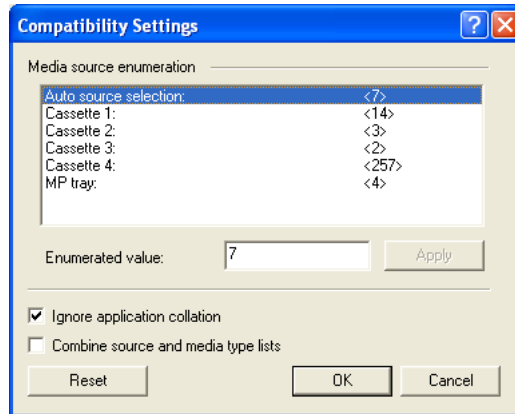
Compatibility settings can be adjusted by clicking the **Compatibility** on the **Device Settings** tab.

Compatibility settings are specified when:

- printing from applications that save paper source information within documents.
- the paper source settings are specified by your system environment.

NOTE: Changing the device settings may result in printing errors. For further details on changing these settings, contact your nearest Kyocera dealer.

- 1** On the **Device Settings** tab, click **Compatibility**. The **Compatibility Settings** dialog box is displayed.
- 2** From the list in the **Media source enumeration** group box, select the paper supply method. The current value is listed in the **Enumerated value** box.



- 3** Enter the new value for the **Enumerated value** and click **Apply**. You can also restore all the parameters to the default by clicking **Reset**.
- 4** Select the **Ignore application collation** check box to bypass the **Collate** setting in the application, and give priority to the printer driver setting.

NOTE: Click **Printing Preferences** on the **General** tab in the **Properties** dialog box to access collated printing options.

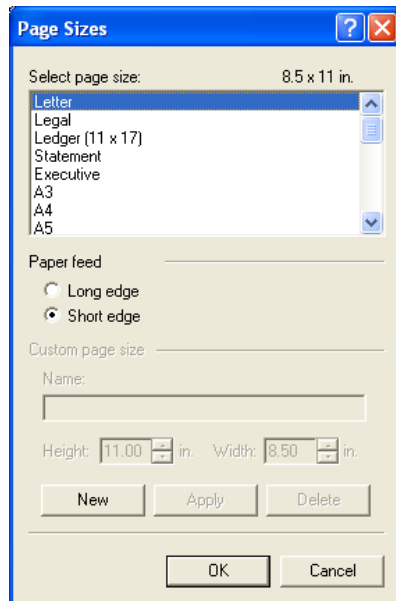
Printing Features

This section explains the various printing features when printing from Microsoft Windows applications.

Using a Different Print Size

The document image is automatically adjusted to match the output page size.

- 1 In the **Properties** dialog box, click the **Basic** tab.
- 2 Click **Page Sizes**. The **Page Sizes** dialog box is displayed.



- 3 Select the original paper size. Click **OK** to return to the **Properties** dialog box.
- 4 Click the **Print Size** drop-down list and select the preferred output paper size.
- 5 Confirm that the proper paper size is loaded. Click **OK** to return to the **Print** dialog box.
- 6 Click **OK** to start printing.

NOTE: The proportion of the source document page size is compared to the output paper size by using the Page Size feature.

Scaling enables you to select a percentage to increase or decrease the original image relative to the original page size. Refer to *Scaling on page 1-5*.

Printing Multiple Pages per Sheet

You can print by arranging multiple pages of the source document on a single sheet of paper. When this function is enabled, the Scaling option is disabled.

- 1** In the **Properties** dialog box, click the **Layout** tab.
- 2** Select the **Multiple pages per sheet** to enable the feature.
- 3** Specify the number of pages in the **Pages per sheet** drop-down list. You can select the horizontal direction for the page layout using **Layout**.

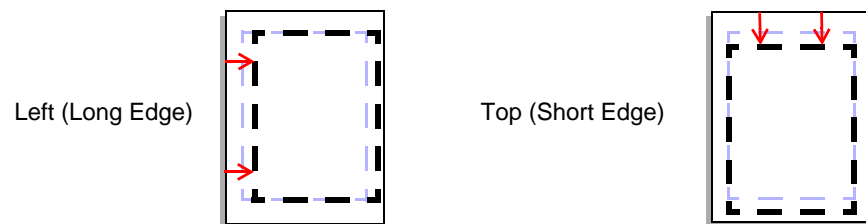
NOTE: If you select four pages per sheet, then four pages are printed on a single sheet as shown in the dialog box in the example above. If **Auto** is selected as layout, pages are arranged from the top left corner to the bottom right corner.

Enabling the **Print borders** check box displays the page borders of each page.

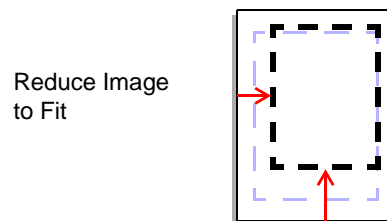
Scaling

Based on the page and print size specified in the **Print size** on the **Basic** tab, you can reduce or enlarge the image from 20 to 500% before printing. However, only one page per sheet can be printed.

- 1 Click the **Layout** tab in the **Properties** dialog box, and enter the scale percentage into the **Scaling** (20 to 500%) field, or adjust the value as needed. For Windows 98, scaling is 20 to 480%.
- 2 If you click **Gutter**, you can adjust the outside margins in a range from 0.20 to 1.00in. (5.0 to 25.4mm).
 - For outside margins to the left of the page, enter a number into the **Left (Long edge)** combo box.
 - For outside margins to the top of the page, enter a number into the **Top (Short edge)** combo box.



- Select the **Reduce image to fit** check box if the printing data extends beyond the edge of the paper when setting a binding margin. The margins are reduced to match the page size adjustment.



When you want to change the page size (for example, to enlarge an A4 size brochure for printing on A3 paper), refer to *Using a Different Print Size on page 1-3*.

Matching the Paper Size before Printing

This machine automatically selects the paper size specified in the **Page Sizes** setting on the **Basic** tab by default when you are printing on regular paper. However, this machine supports a wide variety of printing media.

You can specify the media type in the **Media type** setting for automatic paper source selection when using recycled paper, labels, or transparencies.

- 1 Load the paper in a paper cassette or the MP tray.
- 2 Access the **Properties** dialog box and click the **Basic** tab.
- 3 Click **Page Sizes**.
- 4 Select the original paper size. Click **OK** to return the **Properties** dialog box.
- 5 From the **Source** menu, select the paper source.
- 6 From the **Media type** menu, select the type of media for printing.

Options available in the **Media type** menu are as follows.

Media Type	Usable Paper Cassettes
Plain (64 to 90 g/m ²)	All
Transparency	MP tray
Preprinted	All
Labels	MP tray
Bond (thick paper)	MP tray
Recycled	All
Vellum (Less than 64 g/m ²)	MP tray
Rough (90 to 200 g/m ²)	All
Letterhead	All
Color (64 to 90 g/m ²)	All
Prepunched	All
Envelopes	MP tray
Card Stock	MP tray
Thick	MP tray
High quality	All
Custom (1-8)	Refer to the next section.

- 7 Click **OK** to return to the **Print** dialog box.

- 8 Click **OK** to start printing.

Once printing begins, the machine automatically detects the paper to match the specified page size, paper source and media type.

NOTE: If the paper loaded does not match the size, type, or both, a message displays requesting you to load paper into the MP tray. If you wish to continue to print using a different size than the specified paper source, press the **[Start]** key on the operation panel.

Printing on Paper of Non-Standard Sizes

This machine can print on custom sizes of paper by defining them as custom paper sizes.

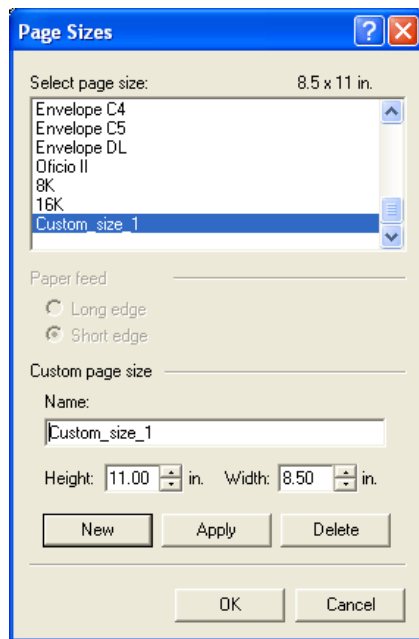
NOTE: For custom paper, supply the paper using the universal (adjustable) paper cassette or the MP tray.

Follow these steps to save custom page sizes in the printer driver.

- 1 Load the custom paper into the printer.
- 2 Click **Start** in the Windows taskbar to access the printer driver properties and then select **Printers and Faxes**. The **Printers and Faxes** window is displayed.

NOTE: Windows 98/Me/2000: Access the printer driver properties by clicking the **Start** button in the Windows task bar and then selecting the Settings > Printer and Faxes window.

- 3 Right-click the printer icon to access the **Properties** dialog box.
- 4 Click **Printing Preferences** to open the **Printing Preferences** dialog box. Click the **Basic** tab.
- 5 Click **Page Sizes**.
- 6 Click **New**. The custom paper name is displayed in the **Select page size** list box.



- 7 Enter a name for your custom page size in the **Name** field.

NOTE: The name can be up to 31 characters.

- 8** Enter the measurements in the **Height** and **Width** boxes in millimeters or inches. (Units are selected from the **User** dialog box of the **Device Settings** tab in the **Properties** dialog box.)

The screenshot shows a 'User Settings' dialog box with the following elements:

- Identification:** Two text input fields for 'User name:' and 'Department:'.
- Units:** Two radio buttons, 'Inches' (selected) and 'Millimeters'.
- Language preference:** A dropdown menu labeled 'Select language:' with 'English' selected.
- Buttons:** 'OK' and 'Cancel' buttons at the bottom.

The following table shows the supported range of sizes for custom paper.

Media Type	Cassette	MP tray
Minimum	148 x 210 mm (5.8 x 8.3 inches)	148 x 98 mm (5.8 x 3.9 inches)
Maximum	297 x 420 mm (11.7 x 16.5 inches)	432 x 297 mm (17.0 x 11.7 inches)

- 9** Click **OK** to save the page size and return to the **Page Sizes** dialog box. Confirm the name of page size you just added.
- 10** Click **OK**.

Repeat the steps above if you want to add other custom paper sizes. A maximum of 20 different paper sizes can be added.

Printing with Custom Paper Sizes

- 1 From the application's **Print** dialog box, access the **Properties** dialog box. (Select **Print** from the **File** menu and select **Properties**.)
- 2 On the **Basic** tab, select the name of your saved paper size in the **Page Sizes** dialog box.
- 3 Select the source cassette for the custom paper from the **Source** drop-down list.
- 4 Click **OK** to return to the **Print** dialog box.
- 5 Click **OK** to start printing.

Printing on Both Sides

This section explains how to enable the duplex printing option. In order to activate this printing option, the **Duplex unit** must be configured on the **Device Settings** tab.

In the table below, the paper sizes and media types are not available for duplex printing.

- Paper size: A6, B6, Executive, B5 (ISO)
- Media type: Transparencies, Labels, Vellum, Envelopes, Cardstock, Thick

- 1 From the application's **Print** dialog box, access the **Properties** dialog box. (Select **Print** from the **File** menu and select **Properties**.)
- 2 Click the **Basic** tab.
- 3 Select the **Print on both sides** check box. Choose either **Flip on long edge** or **Flip on short edge**.
- 4 Click **OK** to return to the **Print** dialog box.
- 5 Click **OK** to start printing.

Printing Watermarks

When printing using watermarks, your preferred text is printed in the document background. You can choose one of four standard watermarks or enter your own text.

Selecting the Watermark

- 1 From the application's **Print** dialog box, access the **Properties** dialog box. (Select **Print** from the **File** menu and select **Properties**.)
- 2 Click **Advanced**.
- 3 Click the watermark icon. The **Watermark** dialog box is displayed.
- 4 Select watermark text from the **Select watermark** drop-down list.

NOTE: The **Select watermark** drop-down list displays four standard and customized watermarks. For further details on adding watermarks, refer to *Adding Watermarks on page 1-11*.

- 5 Click **OK**.

Adding Watermarks

You can enter the text for a new watermark. The text font, color, size, and style can be adjusted.

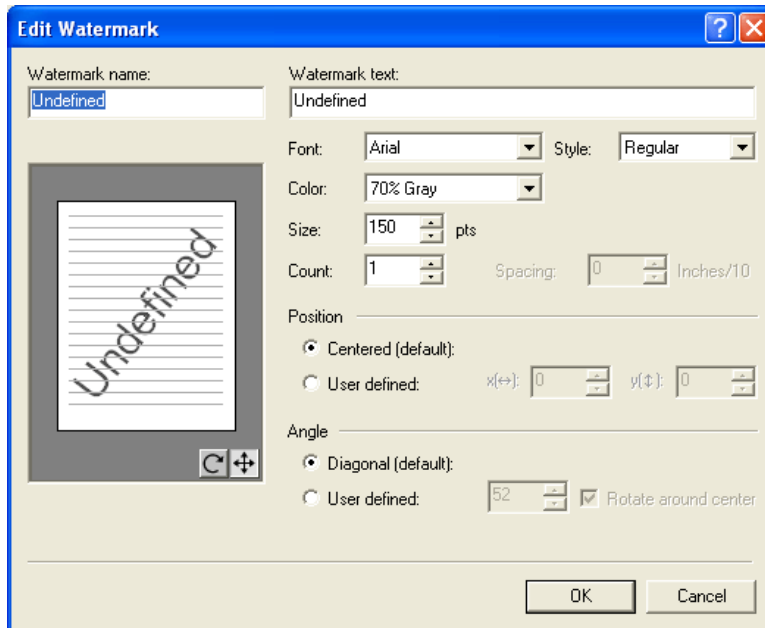
- 1 From the application's **Print** dialog box, access the **Properties** dialog box. (Select **Print** from the **File** menu and select **Properties**.)
- 2 Click **Advanced**.
- 3 Click **Watermark** icon. The **Watermark** dialog box is displayed.
- 4 Click **Add**. The **Add Watermark** dialog box is displayed.
- 5 Enter a name for your watermark in the **Watermark name** field, and enter the text to be printed as a watermark in the **Watermark text** field.
- 6 Specify the font. Select a font from the **Font** drop-down list.
- 7 Specify the color setting.
Select **10% Gray** to **90% Gray** or **Black** in the **Color** drop-down list.
- 8 Specify the font size. The **Size** is measured in points.
- 9 From the **Style** drop-down list, choose from **regular**, **italic**, **bold**, or **bold and italic**.

10 Adjust the number of watermarks printed and the amount of separation space between the text.

- Enter the number of watermarks in the **Count** field.
- Enter the value for separation between watermarks in the **Spacing** spin box in millimeters or inches.

11 Select **Centered (default)** or **User defined** to specify the text position.

- **User defined (default):** Bases the watermark text position on the X and Y values for the horizontal and vertical coordinates.
- **Centered:** Places the watermark text in the center of the page.



NOTE: Manual Adjustment: Hold the left mouse button while dragging the watermark image to the desired position.

12 Specify the text angle. Select **Diagonal** (slanted to the upper right) or select **User defined**, which enables you to enter your preferred angle (measured counterclockwise from 0 to 360 degrees).

User defined: Drag the slider horizontally or enter the value. The angle of the text can be manually adjusted by placing the mouse pointer on the center or end of the text and dragging it to the desired position.

NOTE: Manual Adjustment: Hold the left mouse button while dragging the watermark image to the desired angle.

13 Click **OK**.

Deleting Watermark Text

- 1 From the **Select watermark** drop-down list, select the watermark text you wish to delete. Click **Delete**.
- 2 Click **OK** to confirm the deletion.

Editing Added Watermarks

Edit your own watermarks by following the steps below. When editing your added watermarks, you can change the watermark text, font, color, size, and style.

- 1 From the **Select watermark** drop-down list, select the watermark text for editing.
- 2 Click **Edit**. The **Edit Watermark** dialog box is displayed.

Adjust the text position and other settings as desired. For further details, refer to *Adding Watermarks on page 1-11*.

Watermark Page Settings

- 1 In the **Page selection** group box of the **Watermark** dialog box, choose from **All pages**, **First page only**, **All pages except first page**, or **Only on specified pages** for printing the watermark text.

NOTE: Enter the pages in the text box to print the watermark on specific pages. For example, to print the watermark on pages 1, 3, 5, 6, 7, 8, 9, 10, 11, and 12, enter [1,3,5-12].

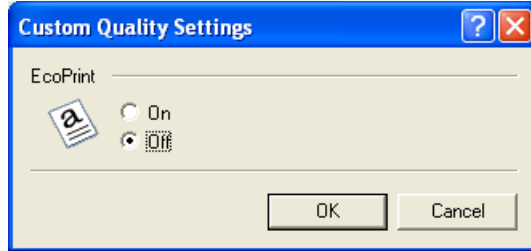
- 2 Select the **Print onto cover** check box to select the cover page for printing the watermark.

NOTE: Enable the **Cover mode** option on the **Publishing** tab to print the watermark text on the front or front and back covers. For further details, refer to *Printing with Covers on page 1-18*.

- 3 Click **OK**.

Print Quality

You can specify the printer settings for EcoPrint. EcoPrint reduces the amount of toner placed on the printed page, extending the life of the toner container, making it both economical and ecological. Because toner saturation is reduced, the entire image, text and graphics, is displayed lighter in the printed job. EcoPrint does not increase print speed.



- 1 From the application's **Print** dialog box, access the **Properties** dialog box. (Select **Print** from the **File** menu and select **Properties**.)
- 2 Click the **Imaging** tab.
- 3 Click to select the print quality from the **Quality** drop-down list.

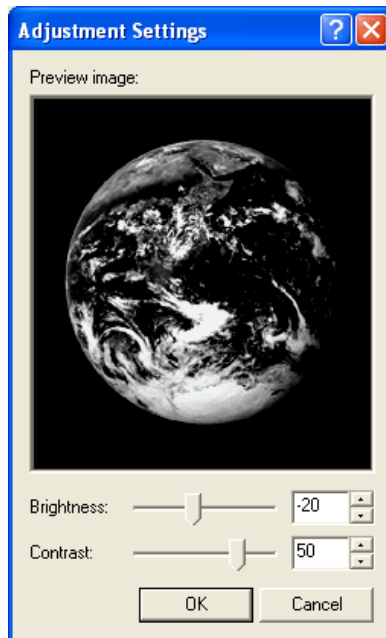
Print Quality Options	Descriptions
High quality	Prints using the highest printer resolution.
User defined	When you select User defined for the print quality, then click the Custom Quality next to drop-down list, the Custom Quality Settings dialog box is displayed. Select On or Off for the EcoPrint feature.

These options enable you to extend the use of your toner container by adjusting the printing resolution.

Grayscale Adjustment

The Grayscale Adjustment setting is used for adjusting the brightness and contrast of graphics produced by monochrome printers. Text remains unchanged.

NOTE: This feature is available for Windows 2000 or XP. In Windows 98/Me, **Adjustment** on the **Imaging** tab is not displayed.



- 1 From the application's **Print** dialog box, access the **Properties** dialog box. (Select **Print** from the **File** menu and select **Properties**.)
- 2 Click the **Imaging** tab.
- 3 Click **Adjustment**. The **Adjustment Settings** dialog box is displayed.
- 4 Use the mouse to drag the slider horizontally toward Right (+) or Left (-) for **Brightness** and **Contrast**. Alternatively, click the arrows at the right to increase or decrease the values in the spin boxes.

Grayscale Adjustment Options	Descriptions
Brightness	Adjusts the brightness of graphics. The darkest setting is -100 and the brightest is +100. Choose 0 (zero) for a regular level of brightness.
Contrast	Adjusts the contrast (the proportion of light to dark) of graphics. The faintest contrast setting is -100 and the strongest is +100. Choose 0 (zero) for a regular level of contrast.

Advanced Graphics Settings

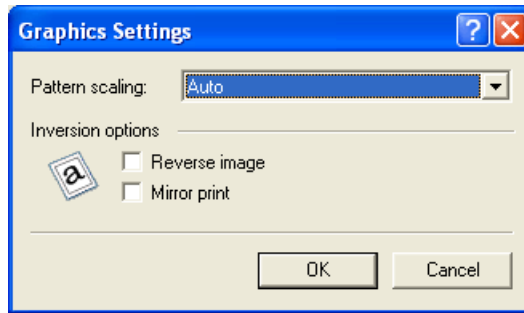
- 1 From the application's **Print** dialog box, access the **Properties** dialog box. (Select **Print** from the **File** menu and select **Properties**.)
- 2 Click the **Imaging** tab.
- 3 Determine the Options settings. Refer to the options and descriptions below.

Options	Descriptions
Print text as black	Prints color and gray characters in black. There is no effect on white text, color images, or graphics.
Print graphics as black	Prints color graphics and text in black, without using grayscales. There is no effect on images or photographs using the following formats: *.bmp: bitmap *.jpg: joint photographic experts group *.psd: Photoshop Data *.tif: tagged image file format This function is enabled in Computer Aided Design (CAD) applications only.

- 4 Click **OK** to save the settings.

Detailed Graphics Settings

- 1 From the application's **Print** dialog box, access the **Properties** dialog box. (Select **Print** from the **File** menu and select **Properties**.)
- 2 Click the **Imaging** tab.
- 3 Click **Graphics**. The **Graphics Settings** dialog box is displayed.
- 4 Select from the options shown in the table below.



Options	Descriptions
Pattern scaling	Improves visual compatibility between screen and print output. If printed patterns and files do not match the on-screen appearance, use this feature to select a different print density. AUTO (default setting): In most cases, this option prints patterns and files to match the on-screen appearance. Coarse: Prints patterns and files with the fewest number of lines, patterns, or dots. Medium: Prints patterns and files with a greater number of lines, patterns or dots than the Coarse setting. Fine: Prints patterns and files with the greatest number of lines, patterns, or dots.
Reverse Image	Outputs a reversed black and white negative effect.
Mirror print	Prints a mirror image of the page, with right and left reversed. Produces a mirror-like effect.

- 5 Click **OK** to save your settings.

Useful Functions

This section describes useful functions of the printer driver.

Cover Mode, Page Insert, and Transparency

Interleaving

This section describes the cover mode, page insert, and transparency interleaving features of the printer driver. When the **Cover mode**, **Page insert**, and **Transparency interleaving** options are used with the MP tray, cassette mode (the default setting), must be set.

- **Cover mode**: Adds a front or back cover to your document.
- **Page insert**: Inserts blank or printed pages before pages in your document.
- **Transparency interleaving**: Inserts a blank or printed page between each transparency.

For your document's front cover or front and back covers, you can insert and print on paper that is a different weight or a different color than the paper for the body of the document. You can also specify cover printing when completing booklet printing settings. The paper used for printing the document body is specified in the **Media type** drop-down list on the **Basic** tab. The source of the cover paper is specified in the **Media for cover** drop-down list on the **Publishing** tab. You can also print on the covers.


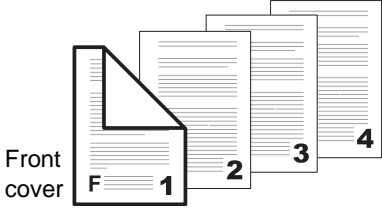
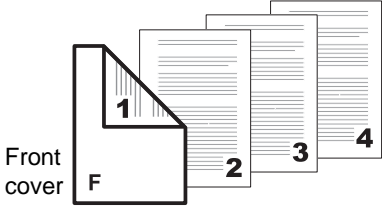
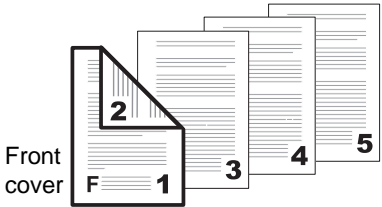
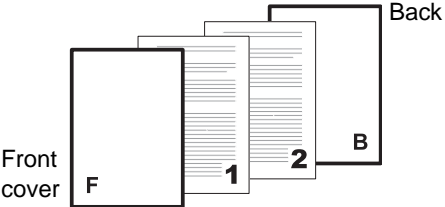
A duplex unit must be connected in order to print using the **Front inside** or **Front outside** on the **Publishing** tab. You must also specify **Print on both sides** on the **Basic** tab.

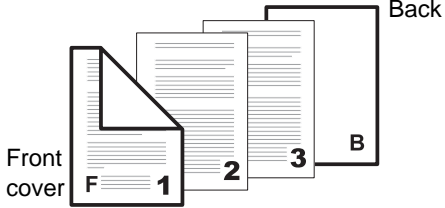
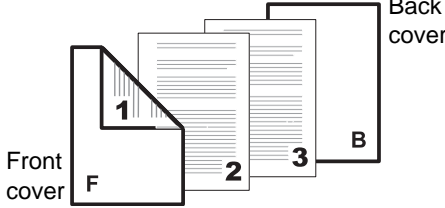
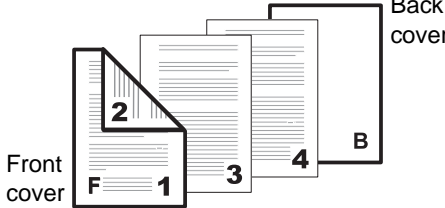
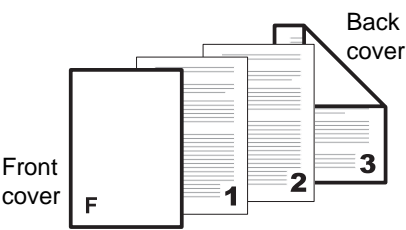
Although the **Cover mode** and **Page insert** may be used simultaneously, they cannot be used with the **Transparency interleaving** option.

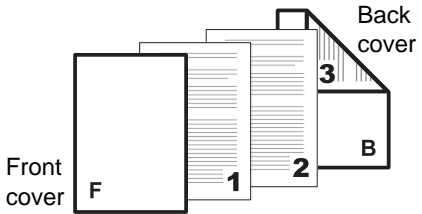
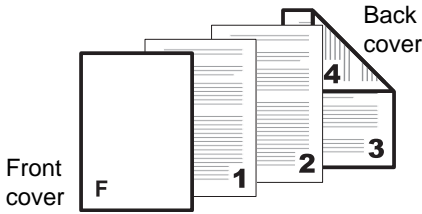
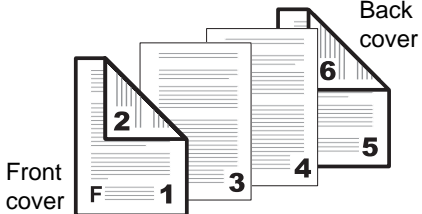
Printing with Covers

- 1** From the application's **Print** dialog box, access the **Properties** dialog box. (Select **Print** from the **File** menu and select **Properties**.)
- 2** Click the **Publishing** tab.
- 3** Select the **Cover mode** check box. Select your desired page arrangement as shown in the following table.

Options for Cover Printing

Check Box Selection	Cover Insertion Type
<input type="radio"/> Front	Inserts a blank front cover 
<input type="radio"/> Front <input checked="" type="checkbox"/> Print onto Front outside	Prints on the outside surface of the front cover 
<input type="radio"/> Front <input checked="" type="checkbox"/> Front inside Duplex Printing (page 1-10).	Prints on the inside surface of the front cover 
<input type="radio"/> Front <input checked="" type="checkbox"/> Print onto Front outside <input checked="" type="checkbox"/> Print onto Front inside Duplex Printing (page 1-10).	Prints on the outside and inside surfaces of the front cover 
<input type="radio"/> Front and back	Inserts blank front and back covers 

Check Box Selection	Cover Insertion Type
<input type="radio"/> Front and back <input checked="" type="checkbox"/> Print onto Front outside	<p>Prints on the outside surface of the front cover and inserts a blank back cover</p> 
<input type="radio"/> Front and back <input checked="" type="checkbox"/> Print onto Front Inside Duplex Printing (page 1-10).	<p>Prints on the inside surface of the front cover and inserts a blank back cover</p> 
<input type="radio"/> Front and back <input checked="" type="checkbox"/> Print onto Front outside <input checked="" type="checkbox"/> Print onto Front inside Duplex Printing (page 1-10).	<p>Prints on both sides of the front cover and inserts a blank back cover</p> 
<input type="radio"/> Front and back <input checked="" type="checkbox"/> Print onto Back inside	<p>Inserts a blank front and prints on the inside of the back cover</p> 

Check Box Selection	Cover Insertion Type
<input type="radio"/> Front and Back <input checked="" type="checkbox"/> Print onto Back outside Duplex Printing (page 1-10).	Insert a blank front cover and prints on the outside of the back cover 
<input type="radio"/> Front and back <input checked="" type="checkbox"/> Print onto Back inside <input checked="" type="checkbox"/> Print onto Back outside Duplex Printing (page 1-10).	Insert a blank front cover and prints on the inside and outside of the back cover 
<input type="radio"/> Front and back <input checked="" type="checkbox"/> Print onto Front outside <input checked="" type="checkbox"/> Print onto Front inside <input checked="" type="checkbox"/> Print onto Back inside <input checked="" type="checkbox"/> Print onto Back outside Duplex Printing (page 1-10).	Prints on the inside and outside of both the front and back covers 

- 4 From the **Media for cover** drop-down list, select the media type or source cassette for the front and back covers. When you choose the media type, a source cassette matching that media is automatically selected.

NOTE: Heavy, thin, or other special papers must be supplied from the MP tray.

- 5 Click **OK** to return to the **Print** dialog box.
- 6 Load the paper for the front and back cover in the paper cassette selected in step 4.
- 7 Click **OK** to start printing.

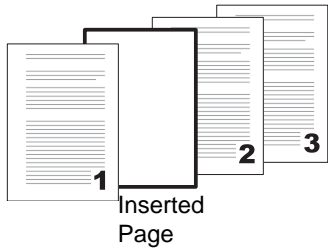
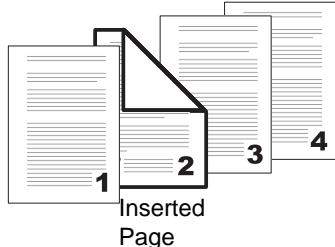
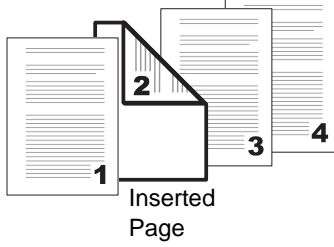
Page Insert

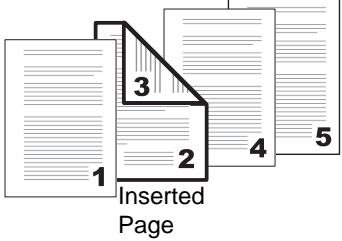
You can insert a preprinted page or a page of a different paper type before a designated page. You can also print on the inserted paper. If a duplex unit is installed, you can also print on the reverse of the inserted page.

Although the **Page insert** and **Cover mode** may be used simultaneously, they cannot be combined with the Transparency Interleaving described in *Transparency Interleaving on page 1-23*.

- 1** From the application's **Print** dialog box, access the **Properties** dialog box. (Select **Print** from the **File** menu and select **Properties**.)
- 2** Click the **Publishing** tab.
- 3** Select the **Page insert** check box. Select the check box corresponding to your desired page arrangement as shown in the following table. To print on both the front and back of the inserted page, enable the **Print onto front** and **Print onto back** check boxes.

Insert Page Combinations

Check Box Selection	Printing Insertion Pages
<input checked="" type="checkbox"/> Page insert	Inserts a blank page before the second page 
<input checked="" type="checkbox"/> Page insert <input checked="" type="checkbox"/> Print onto front	Prints on the outside surface of the inserted page 
<input checked="" type="checkbox"/> Page insert <input checked="" type="checkbox"/> Print onto back Duplex Printing (page 1-10).	Prints on the inside surface of the inserted page 

Check Box Selection	Printing Insertion Pages
<input checked="" type="checkbox"/> Page insert <input checked="" type="checkbox"/> Print onto front <input checked="" type="checkbox"/> Print onto back Duplex Printing (page 1-10).	Prints on both sides of the inserted page 

- 4** Enter the page number to insert. A page will be inserted between the page number you entered and the page before it. You can designate for pages to be inserted for any page from page 2 to page 255.

To designate several pages in the document for insertion, enter a comma (,) to separate them. For a series of insertions in a range of pages, use a hyphen (-). For example, to insert a page before pages 5, 11, 12, 13, and 18, enter [5,11-13,18].

- 5** From the **Media for page** drop-down list, select the media type of the inserted page or the source paper cassette.

When you choose the media type, a source cassette that matches that media is automatically selected. Heavy, thin, or other special papers must be supplied from the MP tray.

- 6** Click **OK** to return to the **Print** dialog box.
- 7** Load the paper for insertion in the paper cassette.
- 8** Click **OK** and begin printing.

Transparency Interleaving

By inserting a page between each sheet of paper, you can avoid damaging the transparencies. This function is only available when printing transparencies supplied from the MP tray. On these inserted pages you can print the same content as for the transparencies.

Transparency interleaving and Cover Mode or Page Insert cannot be used simultaneously.

- 1** From the application's **Print** dialog box, access the **Properties** dialog box. (Select **Print** from the **File** menu and select **Properties**.)
- 2** From the **Source** drop-down list on the **Basic** tab, select **Multi-purpose tray**.
- 3** From the **Media type** drop-down list, select **Transparency**.

- 4 Click the **Publishing** tab.
- 5 Select the **Transparency interleaving** check box. To print the transparency content on the inserted pages as well, Select the **Print onto backing** check box.
- 6 From the **Media for backing** drop-down list, select the media type and the source paper cassette. When you choose the media type, the source cassette where that media is loaded will be automatically selected.
- 7 Click **OK** to return to the **Print** dialog box.
- 8 Load transparencies into the MP tray.
- 9 Click **OK** to begin printing.

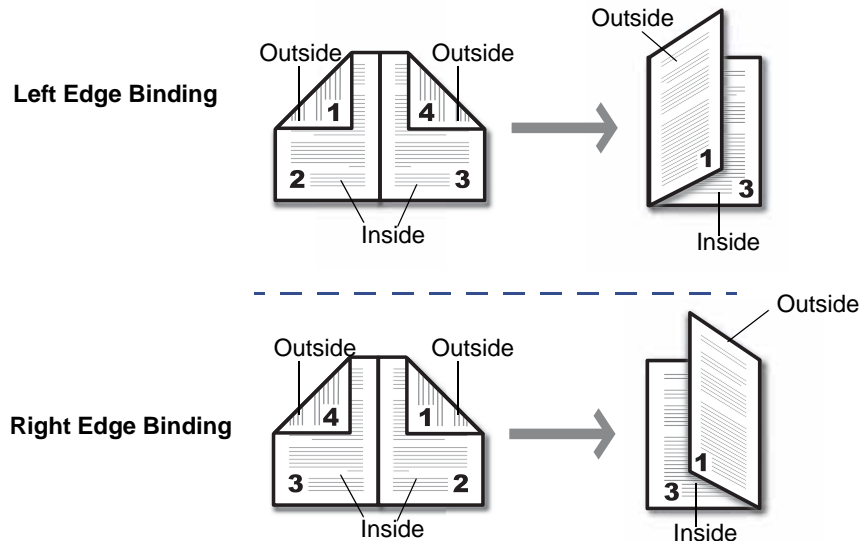
Booklet Printing

Using the **Booklet** option, you can print a two-page layout on both sides of a single sheet of paper, then bind it in the center. Booklet printing is available with printers equipped with a Duplex unit.

The supported paper sizes for Booklet printing are A3, Ledger, B4, A4, and Letter size. Booklet printing can be combined with Cover mode. For further details, refer to *Printing with Covers on page 1-18*.

Left Edge and Right Edge Binding

Printing a four-page document as a booklet, for example, will result in automatic duplex printing in the order shown below. You can choose between left edge binding and right edge binding.



Using Booklet Printing

- 1 From the application's **Print** dialog box, access the **Properties** dialog box. (Select **Print** from the **File** menu and select **Properties**.)
- 2 Click the **Layout** tab.
- 3 Select the **Booklet** check box. Choose either **Left edge binding** or **Right edge binding**.
- 4 Click the **Basic** tab.
- 5 Select the number of copies to print.
- 6 Click **OK** to return to the **Print** dialog box.
- 7 Click **OK** to start printing.

Collating

Follow these steps to collate printing.

- 1 From the application's **Print** dialog box, access the **Properties** dialog box. (Select **Print** from the **File** menu and select **Properties**.)
- 2 Click the **Basic** tab.
- 3 Select the **Collate** check box.
- 4 Select the number of complete sets in the **Number of copies** combo box. When printing using the **Collate** option, specify the number of copies. The document page length must not exceed the tray capacity (for example, 200 sheets).
- 5 Click **OK** to return to the **Print** dialog box, and click **OK** to begin printing. The specified number of copies are produced.

Saving Profiles

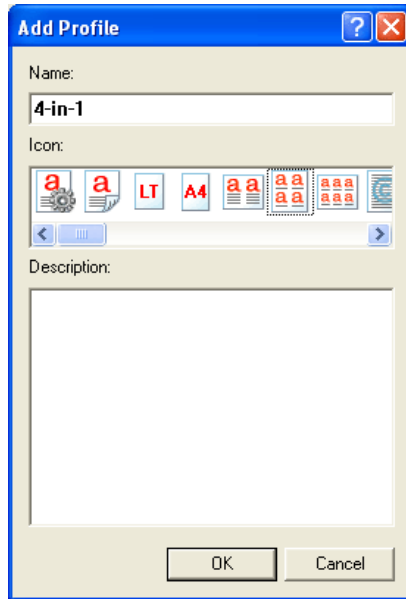
You can save print settings made on the **Basic**, **Layout** or other tabs in the **Print** dialog box. By creating a profile out of the saved settings, they can be easily recalled, eliminating the need to reset them on the dialog box tabs. Profiles can be easily added, edited, or deleted. Profiles from other printers can also be read.

NOTE: If a shared profile is installed when printer driver option settings are being set, its icon is displayed in the list on the **Profile** tab, and it can be shared by each printer.

Creating Profiles

Follow these steps to create a new profile.

- 1 From the application's **Print** dialog box, access the **Properties** dialog box. (Select **Print** from the **File** menu and select **Properties**.)
- 2 Configure the appropriate options on each setting tab.
- 3 Click **Profile** in the **Properties** dialog box. The **Profile** dialog box is displayed.
- 4 Click **Add** to access the **Add Profile** dialog box.



- 5 Enter a name into the **Name** field, and select the **Icon**. The name can be up to 31 characters.
- 6 Enter comments about the settings into the **Description** field. Up to 256 characters can be entered for the comments.
- 7 Click **OK** to save the profile. The display returns to the **Profile** dialog box.
- 8 The **Select profile** area displays the icon and name, and the **Item** and **Detail** columns display the settings and description respectively. Click **OK** to activate the displayed printer settings.

Editing Profiles

The **Name**, **Icon** and **Description** of profiles can be edited.

- 1 From the application's **Print** dialog box, access the **Properties** dialog box. (Select **Print** from the **File** menu and select **Properties**.)
- 2 Click **Profile** in the **Properties** dialog box. The **Profile** dialog box is displayed.
- 3 Select the profile to be edited from the **Select profile**, and click **Edit**.
- 4 The **Edit Profile** dialog box is displayed. Edit the profile's **Name**, **Icon** and **Description**. For further details, refer to *Creating Profiles on page 1-26*.
- 5 Click **OK** to save the edited profile. The display returns to the **Profile** dialog box.

Deleting Profiles

- 1 From the application's **Print** dialog box, access the **Properties** dialog box. (Select **Print** from the **File** menu and select **Properties**.)
- 2 Click **Profile** in the **Properties** dialog box. Select the profile to be deleted from the **Select profile**, and click **Delete**.
- 3 Click **OK**.

Importing and Exporting Profiles

You can save a profile on your personal computer and have it read by other printers. The profiles on several printers can be shared. Print results may vary depending on the printer model.

- 1 From the application's **Print** dialog box, access the **Properties** dialog box. (Select **Print** from the **File** menu and select **Properties**.)
- 2 In the source printer driver, click **Profile** in the **Properties** dialog box. The **Profile** dialog box is displayed.
- 3 Select the profile to be read from **Select profile**, and click **Export**. The **Export Profile** dialog box is displayed.
- 4 Save the profile.
Specify the save location in the **Save in** drop-down list, enter a name for the file in the **File name** field, and click **Save**. Close the **Properties** dialog box.
- 5 In the destination printer driver, click **Profile** in the **Properties** dialog box. Click **Import**. The **Import Profile** dialog box is displayed.
- 6 Select the profile from the **Look in** drop-down list, select the profile name, and then click **Open**.

- 7 If a message dialog box appears displaying *Some profile settings are not applicable to this model. Do you want to continue?*, there are unusable functions in this profile. Click **OK** to return to the **Profile** dialog box.

The profile read by the printer driver displays in **Select profile**, and profile reading is finished.

2 Status Monitor

The Status Monitor is an optional tool which enables you to monitor and manage printer activity.

Accessing Status Monitor

Follow these steps to display the Status Monitor on the desktop.

- 1 Right click on the Status Monitor icon in the Windows task bar.
- 2 Select the machine model, and point to **Show the status monitor**. The **Preferences** window is displayed.
- 3 Click any tabs described below as required.

NOTE: If you do not wish to display the Status Monitor, select **Hide the status monitor** from the menu.

Exiting Status Monitor

Follow these steps to exit the Status Monitor on the desktop.

- 1 Right click on the Status Monitor icon in the Windows task bar.
- 2 Select **Exit**. The Status Monitor exits.

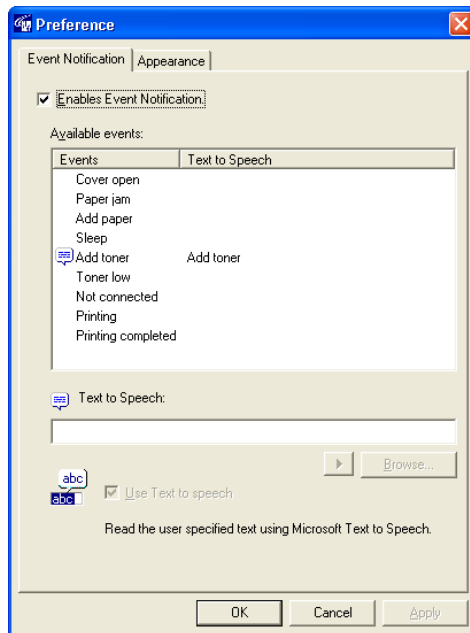
NOTE: You can also exit the Status Monitor by clicking the Status Monitor window and selecting **Close**.

Status Monitor Settings

Status Monitor has two tabs to configure its settings. Use the **Preference** option to set up the Status Monitor.

Event Notification Tab

The **Event Notification** tab is configured with the following items.



Enable monitoring

Select the check box to enable or disable monitoring the events in **Available events**.

Sound file

A sound file can be selected if you require an audible notification. Click **Browse** to search for the sound file.

Use Text to speech

Select this check box to enter text you would like to hear played for events. Although a sound file is unnecessary, this function is applicable for Windows XP.

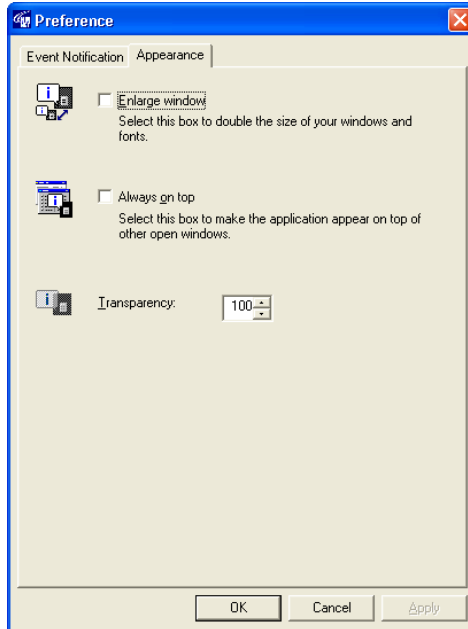
To use this function, follow these steps.

- 1 Select an event which you wish to use the text to speech function in **Available events**.
- 2 Select **Use Text to speech**.
- 3 Enter the text to be played into **Text to speech**.

- 4 Click **Play** to confirm the text is spoken correctly.

Appearance Tab

The **Appearance** tab is configured with the following items.



Enlarge window

Displays a larger sized window for the Status Monitor.

Always on top

Enables the Status Monitor to display in front of other active windows.

Transparency

Displays the Status Monitor as a transparent window (Windows 2000 and Windows XP only).

3 Configuration Tool

The Configuration Tool enables you to customize the printer settings to meet your own requirements. The Configuration Tool window has five tabs. For details of each tab, refer to Help.

NOTE: The contents of the **Properties** dialog box will vary depending on the installed optional devices, and whether this machine is connected via a network interface or a local interface.

Accessing the Configuration Tool

Follow these steps to display the Configuration Tool on the desktop.

- 1 Right click on the Configuration Tool icon in the Windows task bar.
- 2 Select the machine model, and point to **Configure**. The **Configuration Tool** window is displayed.
- 3 Click any tabs described below as required.

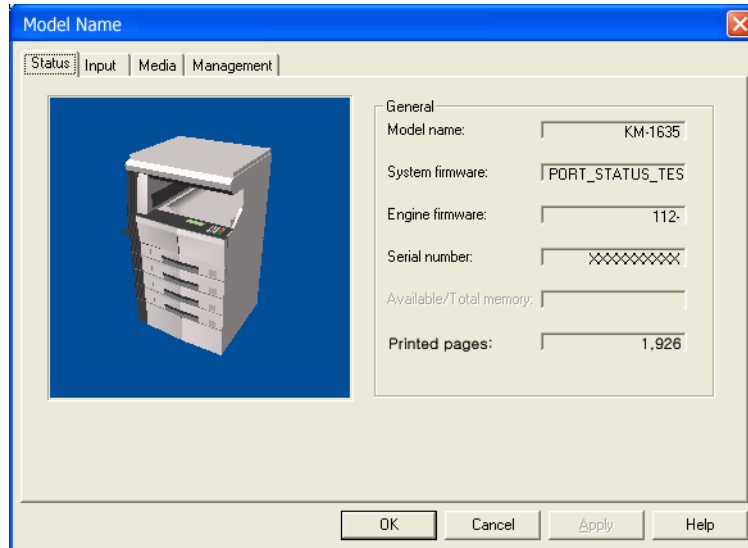
Exiting the Configuration Tool

Follow these steps to exit the Configuration Tool on the desktop.

- 1 Right click on the Configuration Tool icon in the Windows task bar.
- 2 Select **Exit**. The Configuration Tool exits.

Status Tab

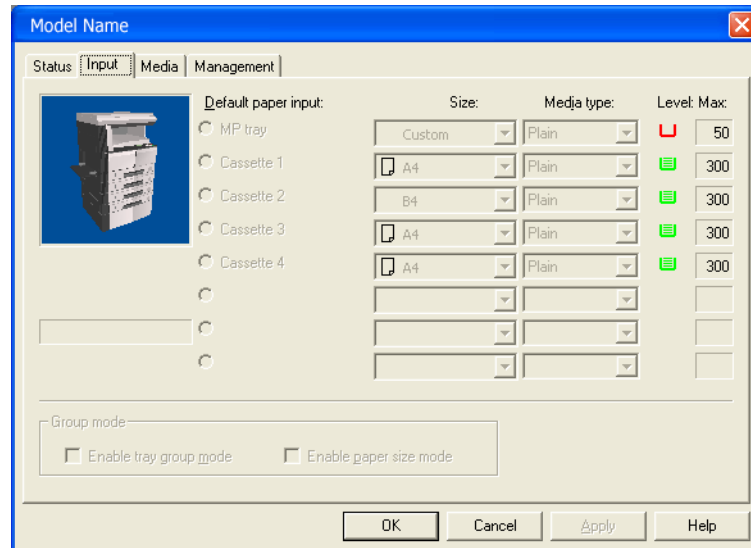
The **Status** tab displays current information about this machine such as the model name, system firmware, engine firmware, serial number, and printed pages.



Input Tab

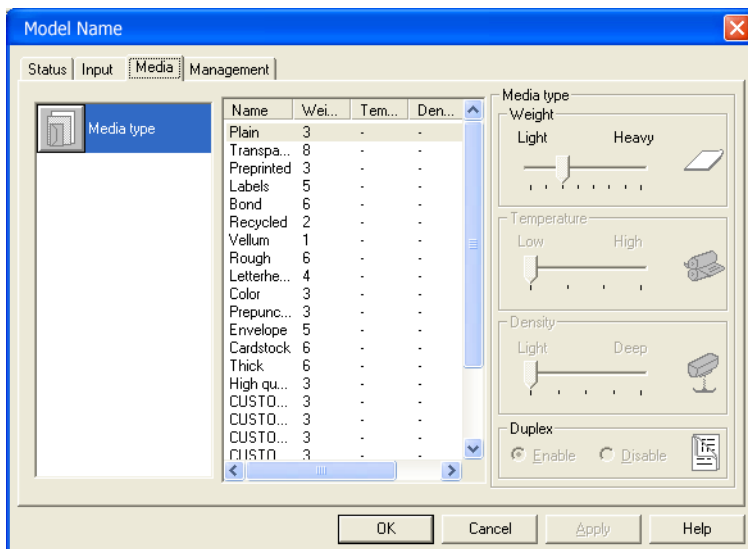
The **Input** tab displays information about the paper feeder attached to the machine, such as the media size, the paper capacity and the maximum paper capacity.

Depending on the optional devices installed, the detailed setting of each media type can be configured in this tab.



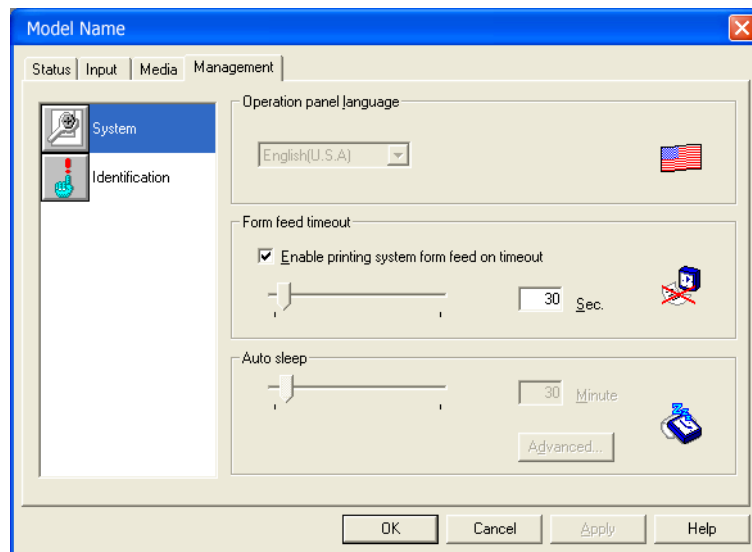
Media Tab

The **Media** tab displays the weight for each media type. It also displays whether each media type is available for duplex printing.



Management Tab

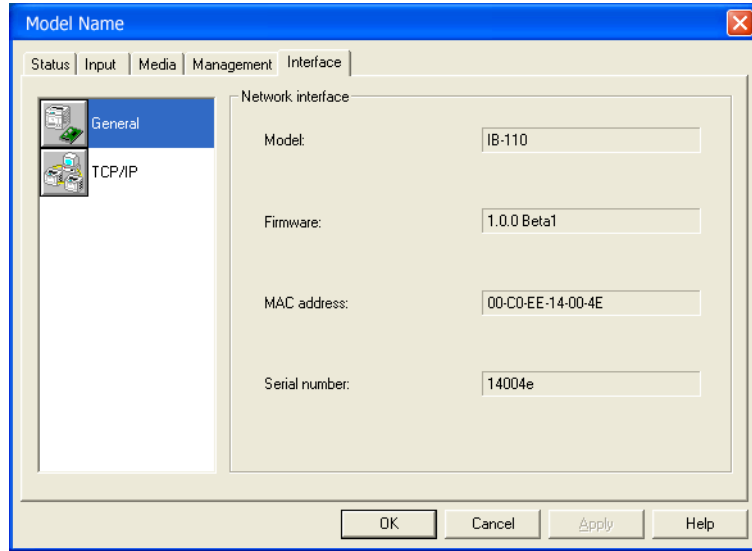
The **Management** tab allows you to configure the management settings of the machine.



Main Item	Sub Item	Description
System	Language	Displays the language for the message display.
	Form feed timeout	Adjusts the form feed timeout time. If the printer receives no data for a certain period, it will time out and release the current interface. It prints whatever data it has in its buffer and feeds out the page.
	Sleep timer	Displays sleep timer setting value. If the machine has not been used for a specified time, it will enter sleep mode.
Identification	Asset number	Specifies the Asset number for the machine. The maximum length of asset number is 15 characters.

InterfaceTab

The **Interface** tab displays the general information for the network interface only when an IB-110 is installed with the machine.



Main Item	Sub Item	Description
General	Network interface	Displays information about the network interface such as model name, firmware version, MAC address and serial number.
Novell	Novell configuration	Configures the settings of Novell NetWare.
TCP/IP	TCP/IP configuration	Displays the information of the TCP/IP configuration such as IP address, subnet mask, and default gateway.

**QUALITY
CERTIFICATE**

This machine has passed
all quality controls and
final inspection.

