

Windows Vista® / Windows Server® 2008 “USB Printer Driver Installation Guide”

* For the Windows Server 2008 users : Windows Vista screens are used in the examples where the installation process is common to the Windows Vista and the Windows Server 2008.

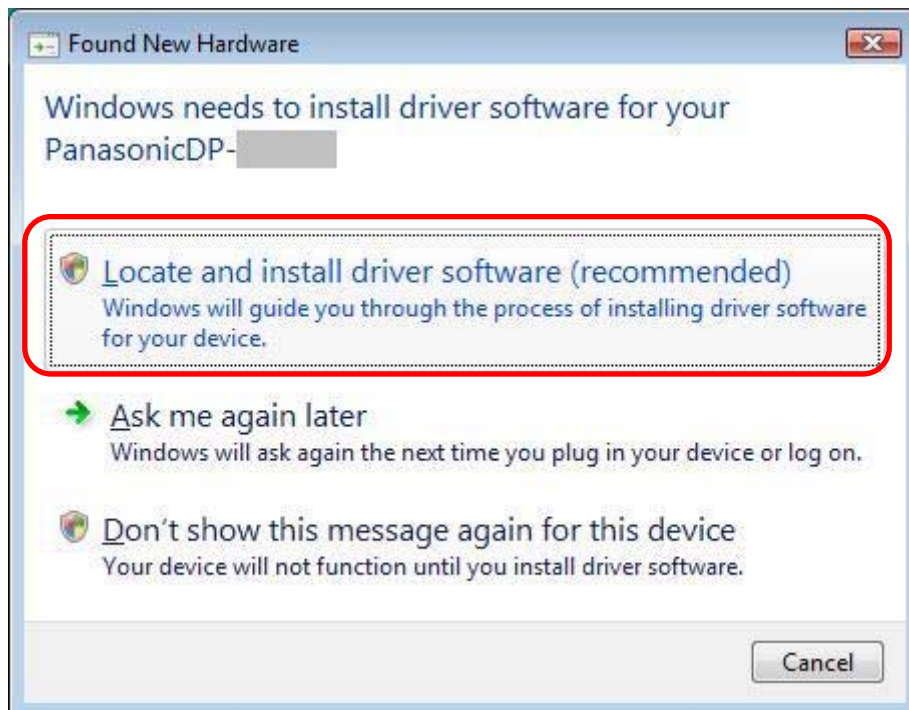
1

Connecting the Device

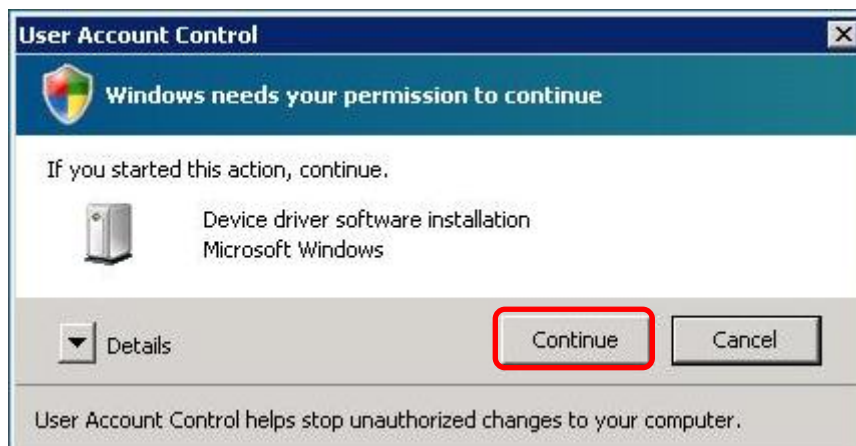
With the **Device Power Turned OFF** connect the USB cable to your computer, then **Power the Device On** to begin the Plug and Play installation.

Found New Hardware

Click “**Locate and install driver software (recommended)**”.

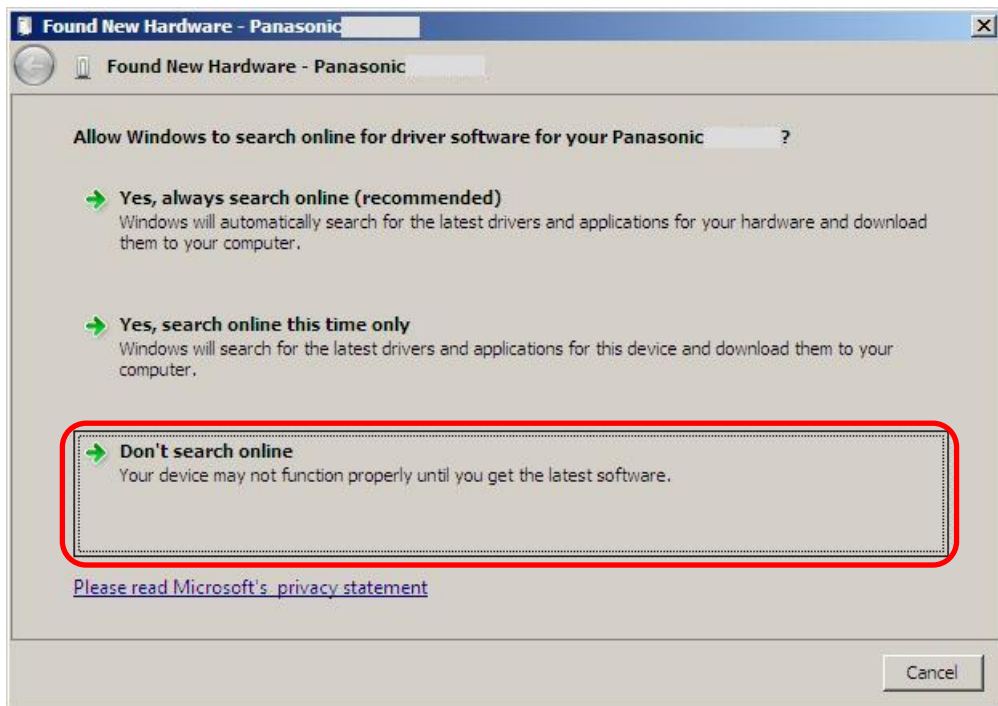


If this screen appears, click “ **Continue** “ .



<< For Windows Server 2008 >>

Click “Don’t search online”. Skip to Step 3.



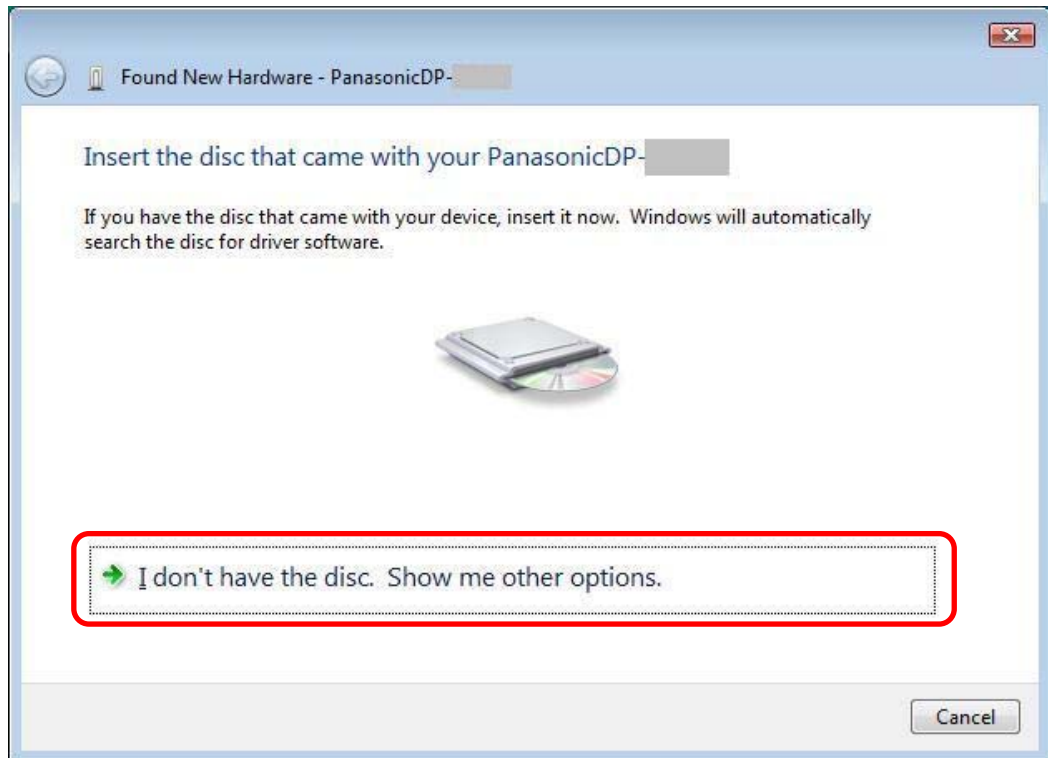
2

Windows is searching the Printer Driver software.
- Searching process may take few minutes.



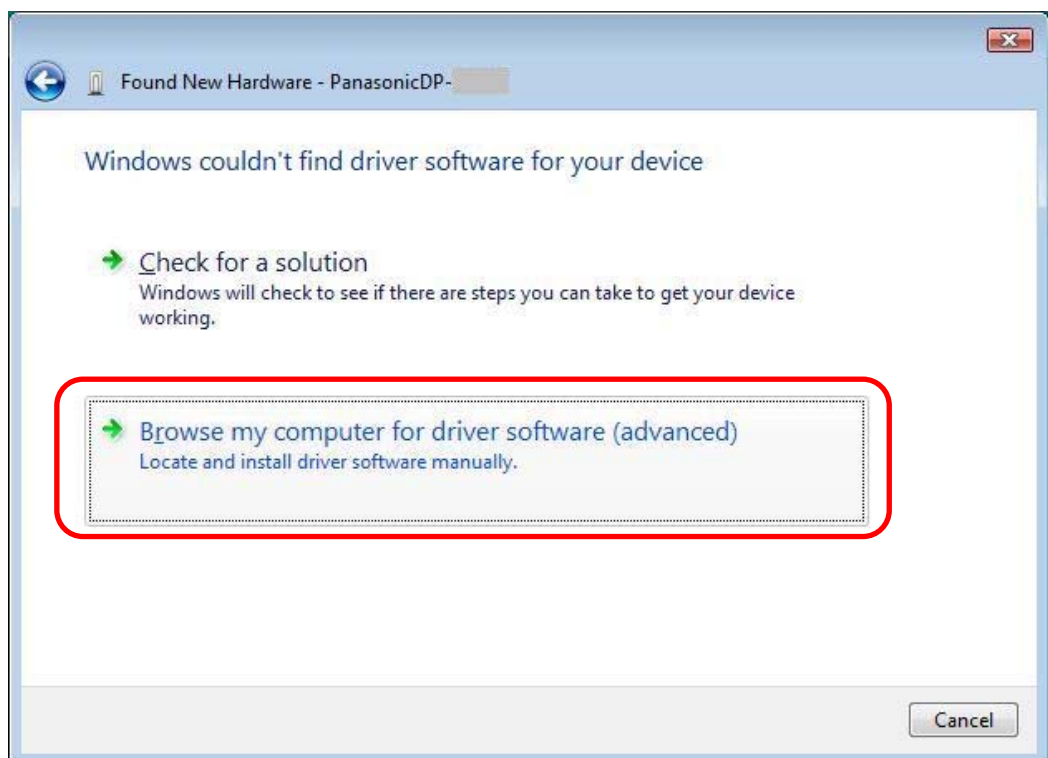
3

Click “I don’t have the disc. Show me other options”.



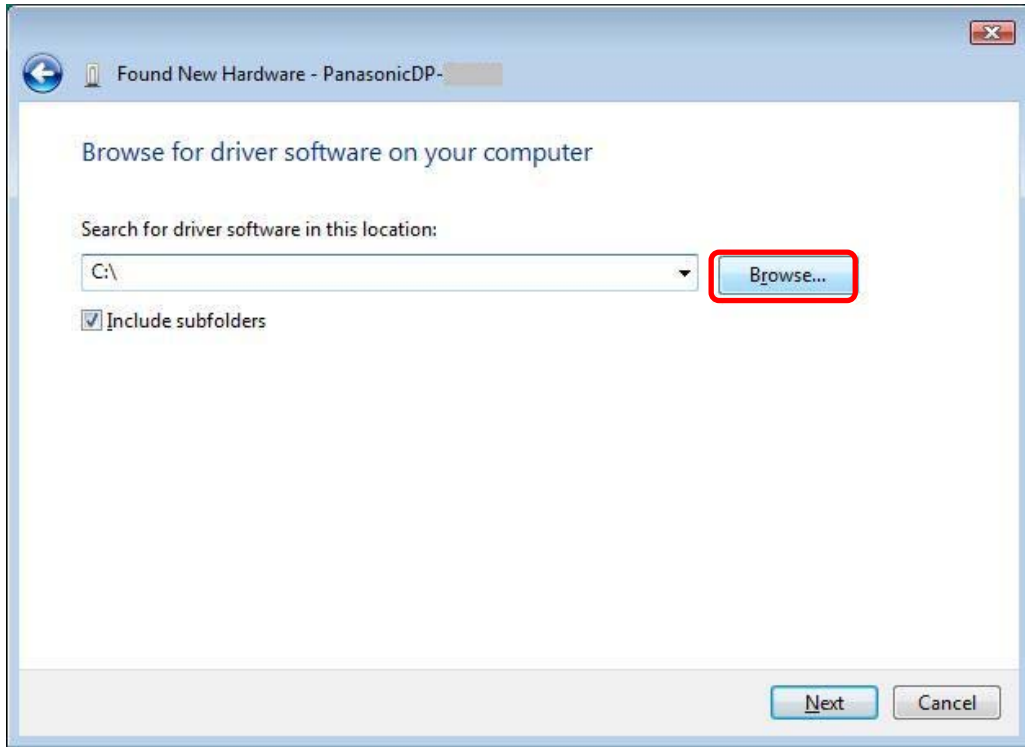
4

Click “Browse my computer for driver software (advanced)” .



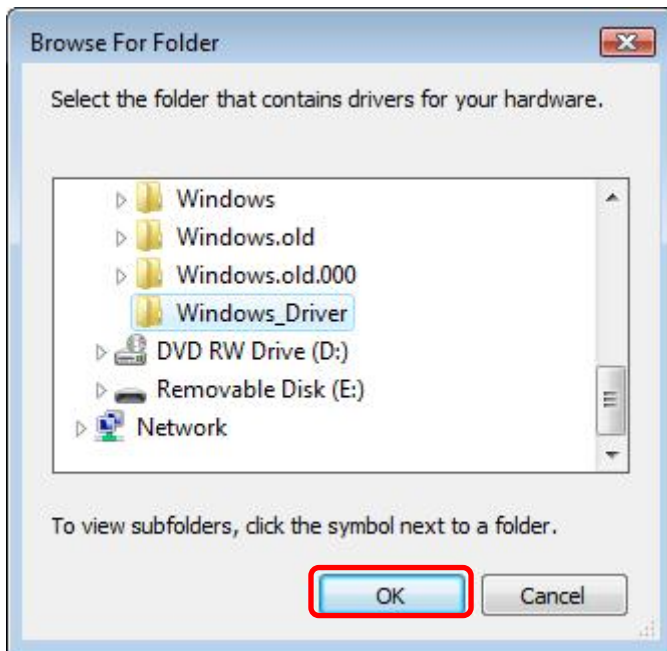
5

Click **“Browse”**.



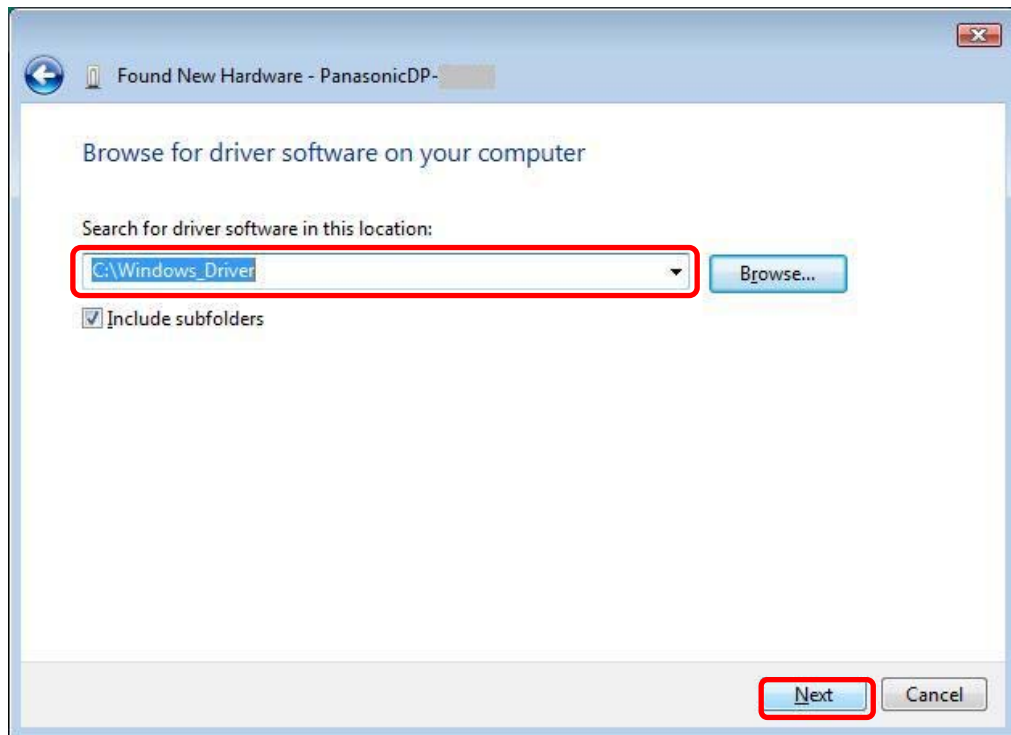
6

Select the folder where the print driver software is located, then click **“OK”**



7

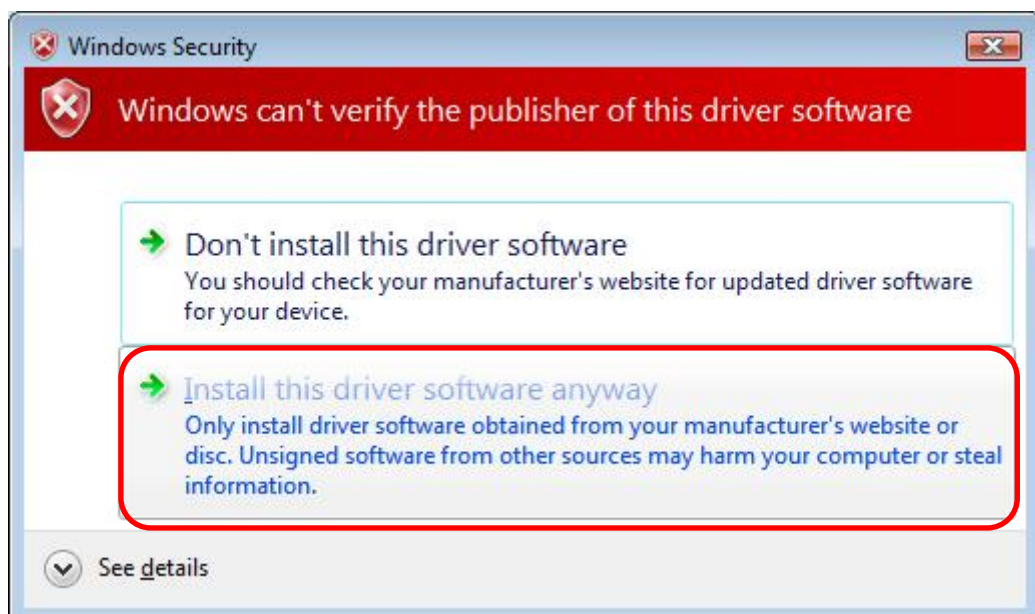
Make sure the folder selected in the previous step is shown in the pull-down menu, then click **“Next”**.



8

When the warning message appears click **“Install this driver software anyway”**.

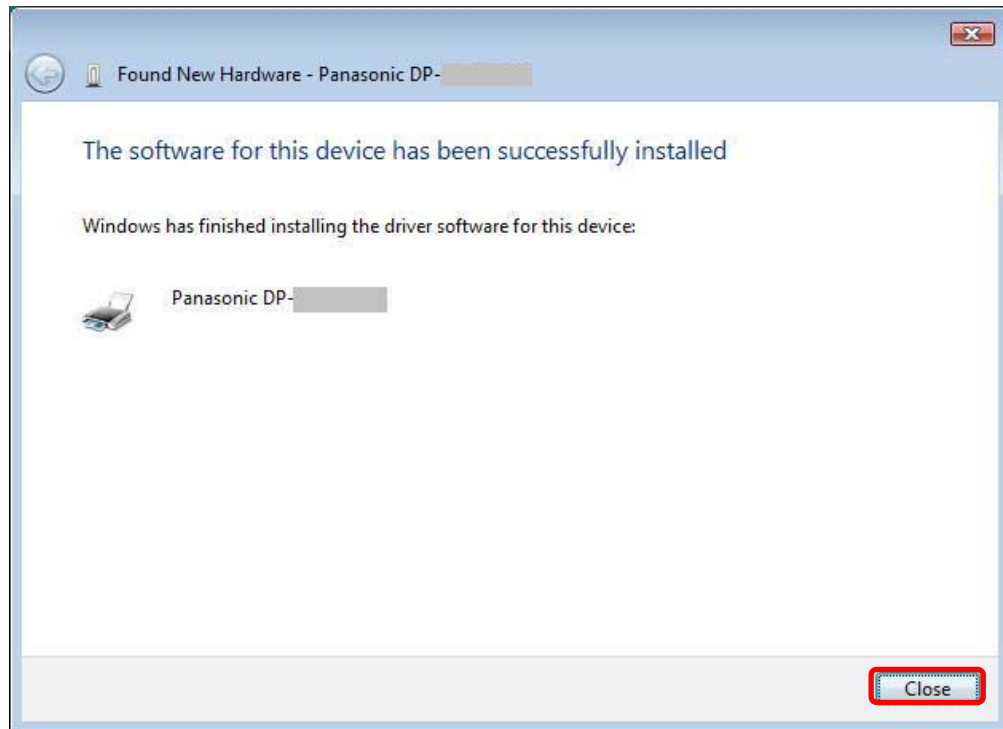
Note: Although the drivers are not digitally signed by Microsoft Corporation, we have verified proper operation within the Windows operating system environment.



9

Completing the Found New Hardware Wizard

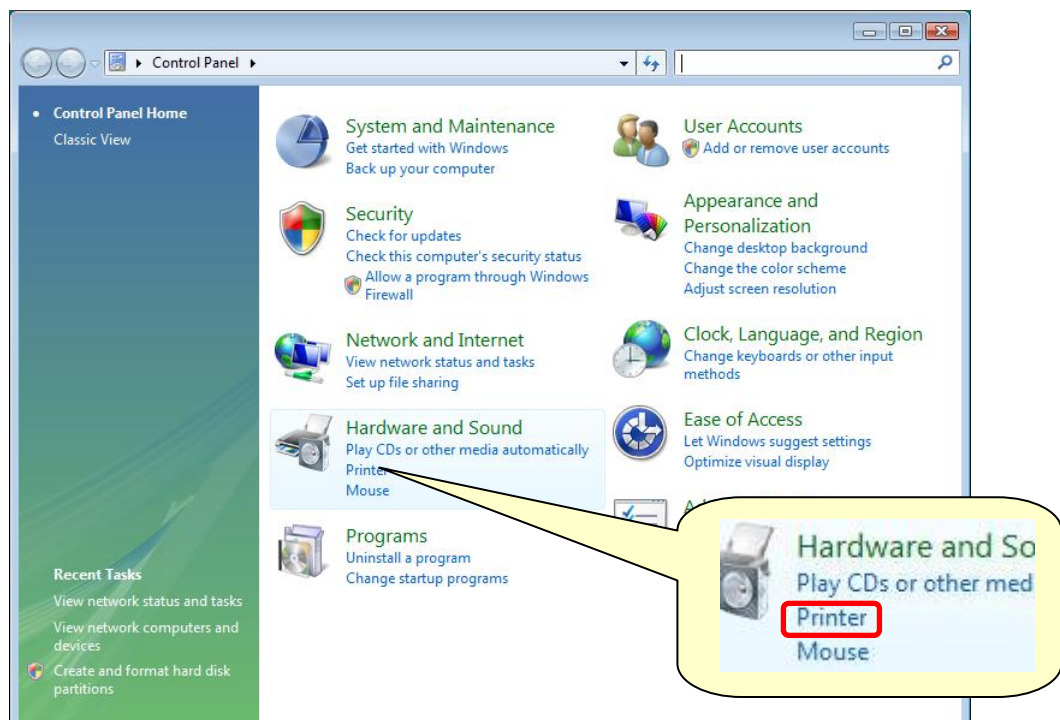
Click “Close”.



10

To display the new printer icon. In the <Control Panel> click “Printer”

* For Classic View : Click “Printers”.



11

A new printer icon will appear in the <Printers> window.

